



TECHNICAL TEAM

technical@royalhippodrome.com

ARTISTIC, TECHNICAL & MANAGING DIRECTOR

Alex Adams - alex@royalhippodrome.com

THEATRE DIRECTOR

Debbie Adams - debbie@royalhippodrome.com

ACCOUNTS, MARKETING & ADMINISTRATIVE MANAGER

Laura May Sivers - laura@royalhippodrome.com

BOX OFFICE MANAGER

Kathryn Vincent - kathryn@royalhippodrome.com

FRONT OF HOUSE MANAGER

Jane White - jane@royalhippodrome.com

Telephone: 01323 802020

General email: enquiries@royalhippodrome.com

General information

Seating Capacity – 600 – including restricted view.

Dressing Rooms - There are 7 dressing rooms accommodating up to 30 people and two separate showers. All rooms have power points.

Rehearsal Studio - On the 3rd floor and offers a large space for meetings, classes and rehearsals. Studio 12m (inc 3.6m mirrored) x 6m with Harlequin dance floor. Includes bluetooth sound system and electronic keyboard. Rates available on request but are competitively priced. Suitable for up to 35 persons.

Dress Circle Bar - The Dress Circle Bar is an ideal meeting space. Suitable for up to 30 persons.

Boardroom - For more formal meetings, secluded from the main the theatre. Suitable for up to 12 persons. Rates available on request.

Catering - We do not have onsite catering facilities.

Wardrobe / Green Room - On the first floor with a free washing machine, tumble dryer, iron and ironing board also available. Microwave, fridge and tea / coffee making facilities. Power points inc USB sockets

Staffing - As agreed in contract

Car Parking – *PLEASE NOTE: **No parking is available at the theatre.** There are Pay and Display options on adjacent roads and the seafront, which become free after 6pm.

We continue to lobby local Govt and Council to improve this situation.

WiFi – There is Free WiFi available when you arrive, no password required. search for Royal Hippodrome

FOH Tech Positions – House position is at the back of the Dress Circle. “Touring” position available at back of the Stalls. Rows O,P & Q, 7-10 are withheld for Touring operating position.

LOADING

Load In

From an on-street public loading bay at front of building (nearest to Stage Right)

Stage Left

Alley Narrowest – 1.48m

Door Width – 1.50m

Door Height – 2.97m



Stage Right

Alley Narrowest – 1m

Door Width – 0.91m

Door Width – 2.07m



POWER

We have a 200A Single Phase supply which feeds all of backstage (including domestic and dimmers).

Stage Power

1 x 32A Single Phase Socket DSR

1 x 63A Single Phase Socket DSR

Various 13A Sockets around stage

1 x 16A tour bus power available at front of Stage Door Alley

STAGE DIMENSIONS

Grid Height: 12.8m **Pros Height:** 5.40m **Bar Length:** 9.10m **Pros Width:** 7.50m

Stage Depth: Front of Stage to Star Cloth = 6.5m

Including Pit cover = 8.6m (Allows for U/S crossover)

BOI: 300mm from FOS

RAKE: 1:24

	Mm	CURRENT ITEM ON BAR * may change	SHOW REQUIREMENT
D/S APRON	2200	CAN BE REMOVED FOR A PIT	
SAFETY CURTAIN	0		
HOUSE TABS	400	OPERATED FROM STAGE LEFT	
HAND WINCH	720	LX 1	
HEMP			
HEMP	1150	BORDER	
HEMP			
HEMP	1370	LEGS	
HEMP	1550	SLASH (SEASON SHOW)	
HEMP	1900	LX 2 * Please note on Hemp*	
HEMP			
HEMP		BORDER	
HEMP	2780	LEGS	
HAND WINCH	3125	LX 3	
GRID BEAM			
HEMP	3530	SLASH (SEASON SHOW)	
HEMP	3820		
HEMP			
HAND WINCH	4200	LX 4	
HEMP		BORDER	
HEMP			
HEMP		LEGS	
HEMP			
HEMP	5200	LX 5 LED Battens	
HEMP			
HEMP			
HEMP	5960	GAUZE	
HEMP	6230	LED RGB STARCLOTH	
BACK WALL	6890	660mm CROSSOVER	

*As **THE RHT IS HEMP FLYING**, There is a maximum SWL of 90KG per bar and requires a 3x Competent Person lift. **LX bars can only be moved or stripped by prior agreement and recharge.**

LIGHTING

Lighting Console: Zero 88 FLX

Dimmers: 80 x 2.5kw and 5 x 5kw Strand LD90

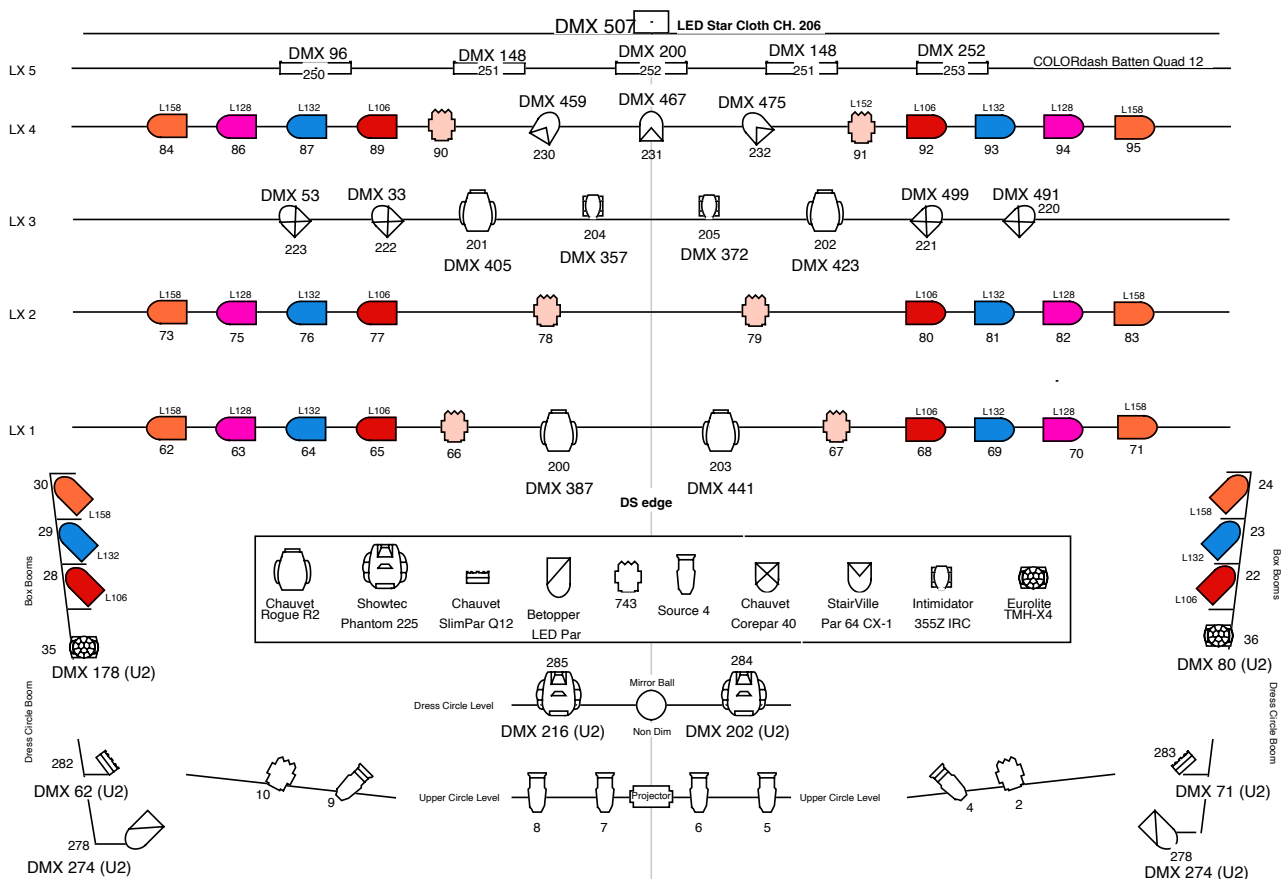
Lanterns:

- 4 x Source 4 19°
- 36 x PAR 64 (CP62)
- 6 x eurolite LED PFE-10 Profile
- 5 x Chauvet COLORdash Batten QUAD 12 RGBA
- 4 x Chauvet SlimPAR Q6 USB IRC PAR Can with 6x5W Quad LEDs
- 4 x Chauvet Core Par 40 LED Wash
- 8 x Stairville LED Pars RGBW
- 4 x Chauvet Intimidator Spot 375Z IRC
- 4 x Chauvet Rogue R2
- 2 x Showtec Phantom 225,
- 1 x 100cm Mirror Ball with rotator

Follow Spots: 2 x Eurolite LED SL-350 DMX Search Lights

House Rig:

*Can be moved by prior arrangement. Please note this would incur recharge. For details please contact the Technical Director.



SOUND

Control

- 1 x Midas M32 mixing console & digital stageboxes
- 2 x Mac Mini (Sound; AV) Qlab & go button, Spotify etc, HDMI projection

PA

The "Main PA" is spread across the 3 levels of the Auditorium: Stalls (300), Dress Circle (180) and Upper Circle (120); processed in the Matrices of the M32.

Touring Mixing Consoles can feed into the House System from SL.

Amps are mixture of Crown/QSC/Dynacord.

Stalls

- Subs (mono) 2 x Dynacord FX 20
- Stalls L/R 2 x Dynacord FX 12 or 2 x Achat 806 (depending on show)
- Fills (mono) 2 x Achat 204

Dress Circle

- Dress L/R 2 x Achat 206
- Fills (mono) 3 x Achat 204

Upper Circle

- Upper L/R 2 x Achat 206
- Fills (mono) 2 x Achat 204

Monitoring

We can accommodate up to 8 independent monitor mixes, spread over 10 loudspeakers.

- 4 x Achat 206 (smaller 2x6" loudspeakers)
- 4 x Studiospares 248450 (medium 12" stage monitors)
- 2 x Studiospares 248420 (large 2x12" Drum Fills)
- 1 x JBL Control 1 @ Prompt Desk (small DSM monitor)

Mics/Accessories:

Wireless Microphone Systems: 12 channels of Sennheiser EW100:

- 12 x Sennheiser Headset Wireless Microphones
- 4 x Sennheiser Handheld Wireless Microphones

-

- 3 x Shure SM57 instrument microphone
- 4 x Shure SM58 vocal microphone
- AKG Drum Mic Kit
- 3 x Crown Boundary Microphones
- Assorted DI Boxes
- XLR, power, and Mic Stands

COMMS

House Sound, House LX, SL Prompt Desk, Flys, Followspots.

An additional set can be run to touring FOH Position and to DSR.

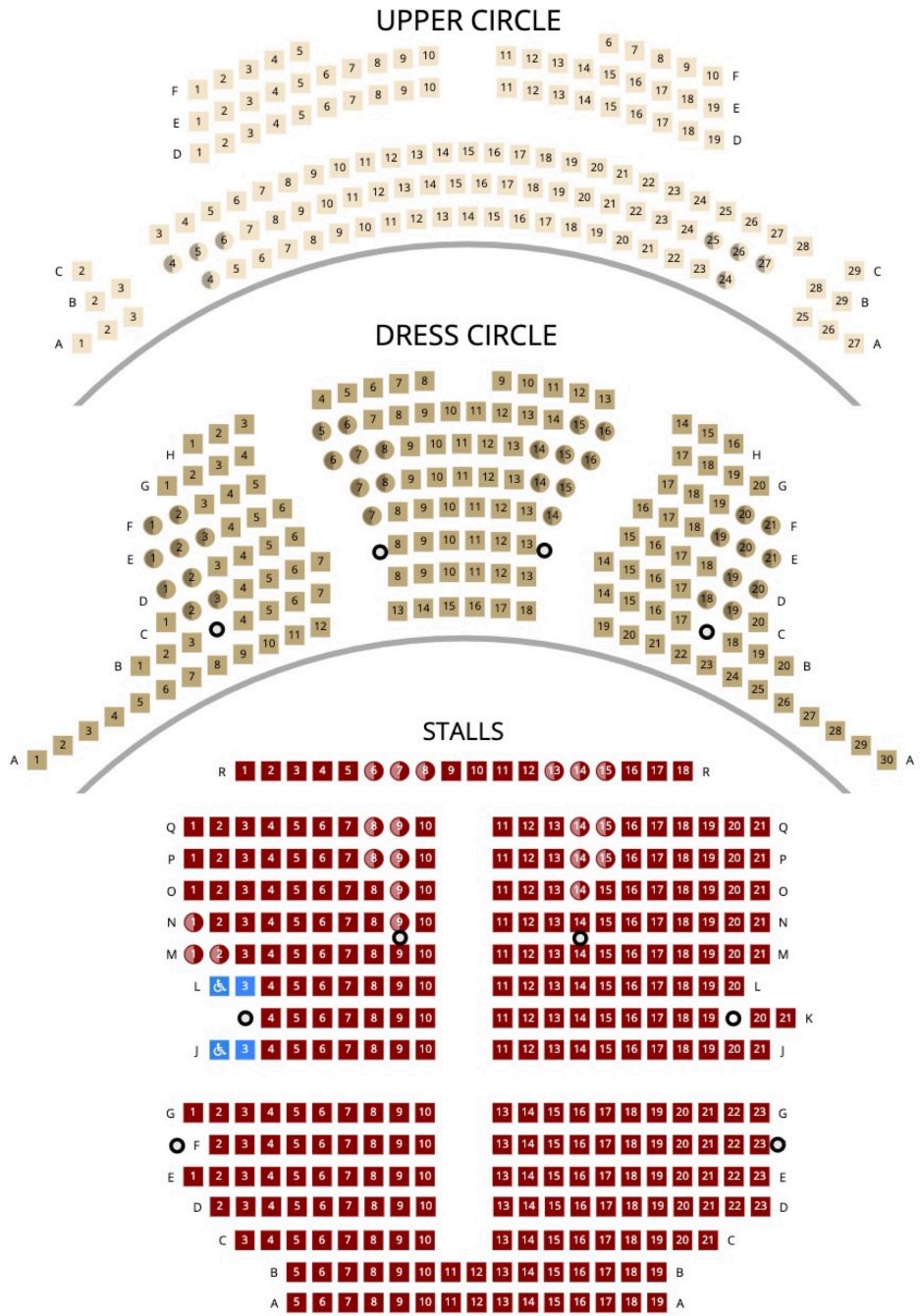
Show Relay System to all dressing rooms and FOH Bars

ADDITIONAL CHARGES

ITEM	NUMBER	COST (all prices subject to VAT)
Sony VPL-FHZ120L Laser Projector	1	£60 per day
SENNHEISER Hand Held Radio Mic	4	£50 per unit, per performance
SENNHEISER E100 Radio Mic with head rig	16	£50 per unit, per performance
Crown Float Mic	3	£35 per unit, per performance
AKG Drum Set	1	£50 per day
Chavauet Hurricane Hazer	1	£30 per performance
Mini Mist Smoke Machine	2	£30 per unit, per performance
Follow Spot	2	£50 per unit, per performance
Additional Staff (outside of contract)	Available on request	£20 per hour
Towels	Available on request	£5 per towel (Laundry service)



SEATING PLAN



STAGE