



Theatre by the pier

The Royal Hippodrome Theatre

Technical Specification

Venue Information

The Royal Hippodrome Theatre
108-112 Seaside Road,
Eastbourne,
BN21 3PF

Email: enquires@royalhippodrome.com

Admin: 01323 802020

Seating Capacity: 560

Car Parking: No parking is available at the theatre but there are pay and display options on adjacent roads and on the seafront. Parking is free after 6pm

Dressing Rooms: There are six dressing rooms accommodating 20 people, two separate showers, all rooms have power points.

Storage Facilities: As agreed

Catering: Available on request

Wardrobe: One wardrobe room with washing machine and tumble dryer

Get-In: From on street, down the alley at right hand side of theatre to dock door with three steps up or from left hand side alley through a single fire door directly onto stage.

Staffing: As agreed in contract

Rehearsal Studio: The Studio is on the 3rd floor and offers a space for meetings, classes and rehearsals. Rates vary depending on the day and time but are competitively priced.

Dress Circle Bar: The Dress Circle Bar is an ideal meeting space.

Boardroom: For more formal meetings, It is totally secluded from the main the theatre.

Technical Specification

Lighting

Lighting Control

1 x Zero 88 FLX
80 x 2.5 kw and 5 x 5kw Strand LD90 Dimmers

Lanterns

19 x Cantata 18/30° Profiles (1.2kw)
36 x PAR 64 (CP62)
10 x Strand Cantata F Fresnels (1.2kw)
4 x PAR 64 Chrome Floor cans (CP62)
4 x Coda 4 (500 w)
8 x Stairville LED Pars RGBW
1 x 100cm Mirror Ball with rotator
2 x Par 36 Pin Spots

2 x Strand Solo CSI follow spots

Auxiliary Power

1 x 32amp single phase - sound power DSR
1 x 63 amp single phase - DSR
13 Amp Sockets (Various)

Sound

1 x Behringer X32 Digital Mixer
2 x S16 stage boxes (DSL)
1 x Crown XTI 2000 (Subs)
2 x Crown XTS 2000 (FOH)
2 x t.amp TA1050 MK-X (Monitors)
4 x Studio Spares 248420 (FOH)
2 x Studio Spares 248770 (Subs)
4 x Studio Spares 248450 (Monitors)

Show Relay System to all dressing rooms

Techpro Cans – 6 Stations (LX, SND, Prompt Desk, Flys and 2 x F/S)

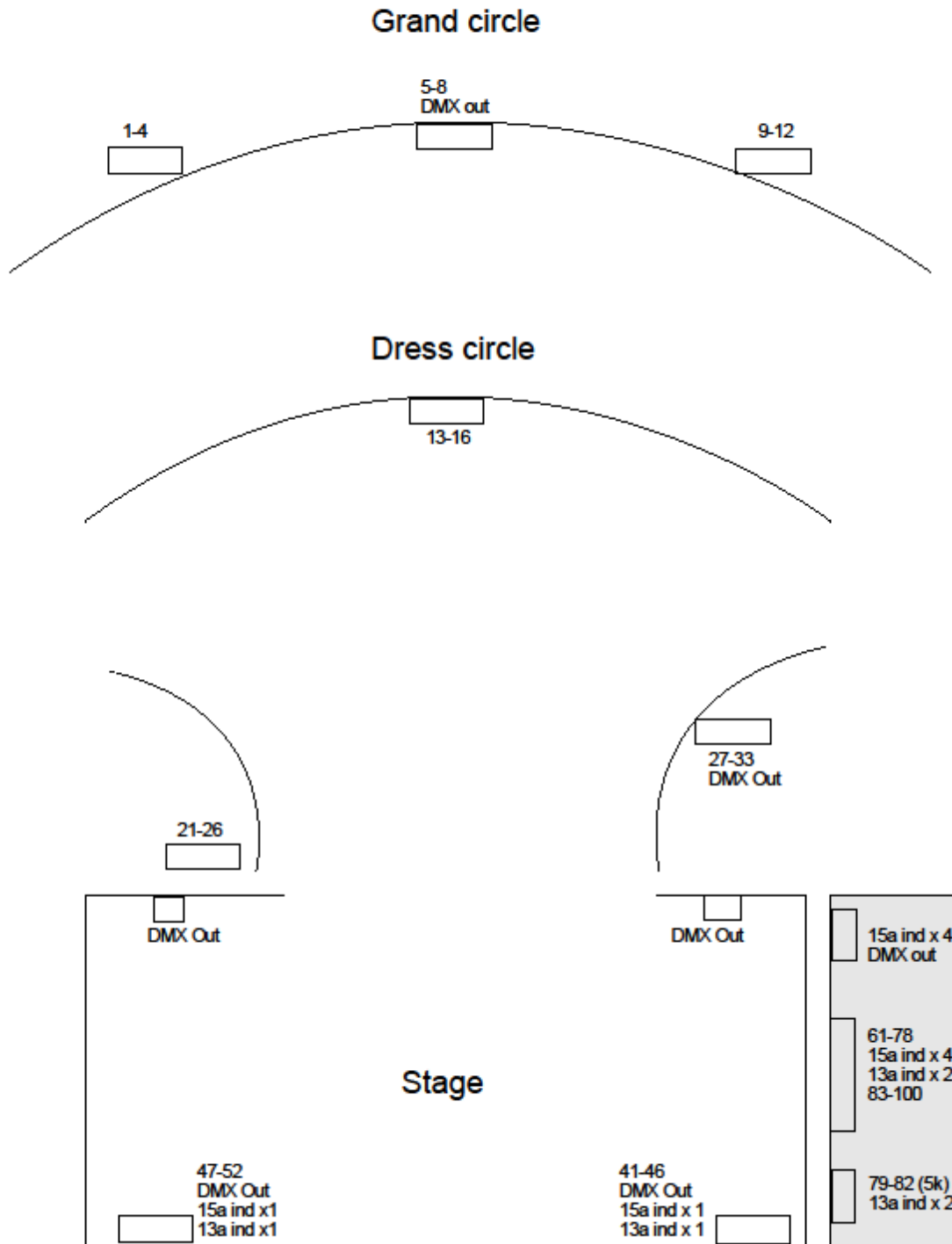
Stage Dimensions

Grid Height:	42ft	12.80 m
Stage Depth:	24ft	7.31m
Pros Width:	25ft	7.58m
Pros Height:	17ft	5.40m
O.P. Wing:	8ft	2.44m
P.S. Wing:	8ft	2.44m
Flying Bar Length:	30ft	9.15m
Stage Rake:	1:24	
Stage Extension:	(Orchestra pit covered)	5.75ft 1.75m

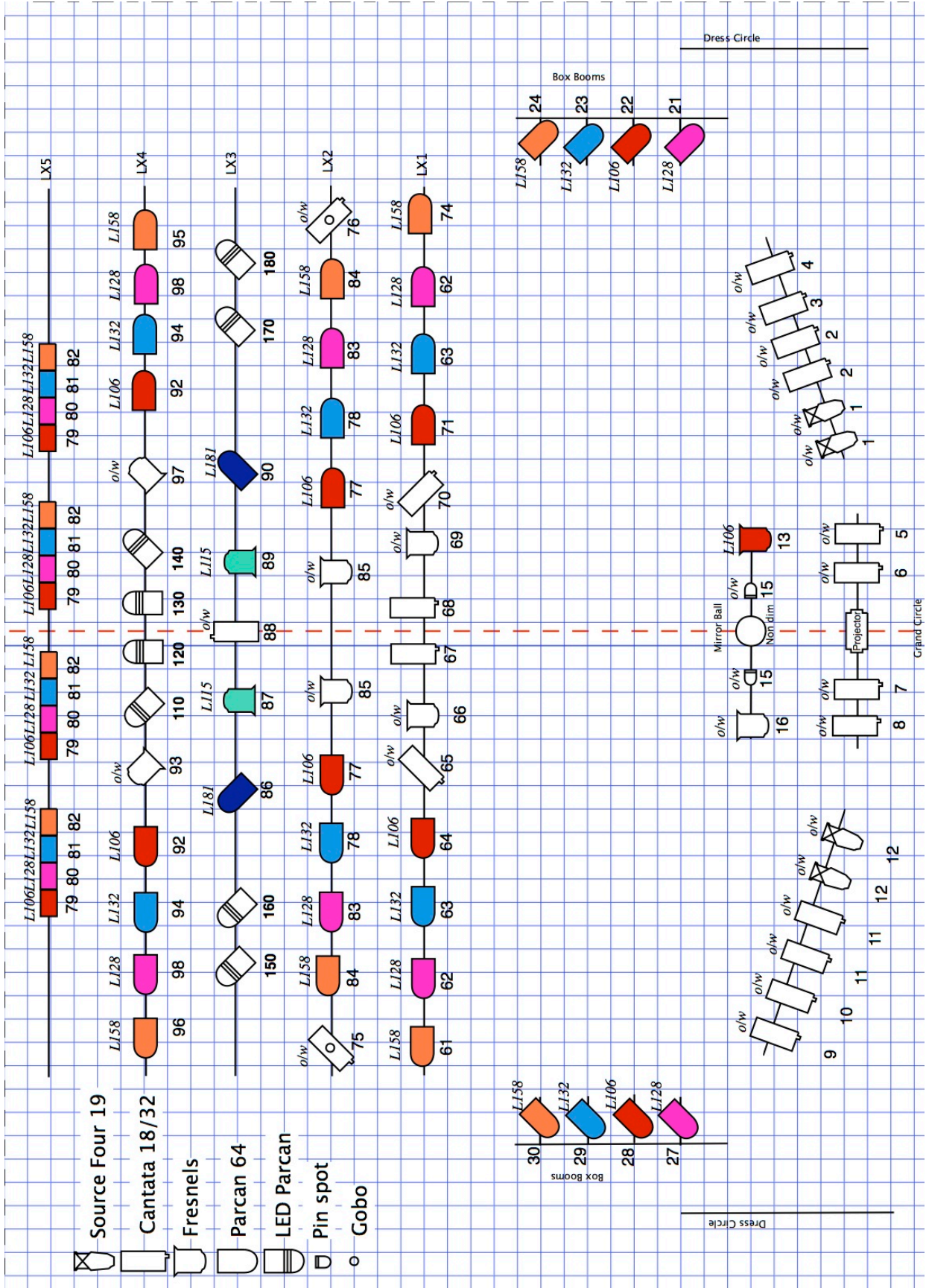
Royal Hippodrome Theatre – Hanging Plot

<i>Bar</i>	<i>Item</i>	<i>Appox. weight</i>
Winch 1	House border	
Counterweight 1	House Tabs	
Hemp 1		
Hemp 2		
Winch 2		
Hemp 3		
Hemp 4		
Hemp 5		
Hemp 6		
Hemp 7		
Hemp 8		
Hemp 9		
Hemp 10		
Hemp 11	No bar	
Hemp 12		
Hemp 13		
Winch 3		
	Grid Gap	
Hemp 14		
Hemp 15	No bar	
Hemp 16		
Winch 4		
Hemp 17	No bar	
Hemp 18		
Hemp 19		
Hemp 20	No bar	
Hemp 21		
Hemp 22		
Hemp 23	No bar	
Hemp 24	No bar	
Hemp 25		
Hemp 26	No bar	
Hemp 27		
Hemp 28		
Hemp 29		

Royal Hippodrome Theatre – Circuit layout



Standard Lighting Rig



Seating Plan

THE ROYAL HIPPODROME THEATRE EASTBOURNE

C	3 4 5 6 7 8 9 10 11 12 13 14 15 16 17 18 19 20 21 22 23 24 25 26 27 28	C
B	4 5 6 7 8 9 10 11 12 13 14 15 16 17 18 19 20 21 22 23 24 25 26 27	B
A	4 5 6 7 8 9 10 11 12 13 14 15 16 17 18 19 20 21 22 23	A

GRAND CIRCLE

H	1 2 3	4 5 6 7 8 9 10 11 12 13	14 15 16	H
G	1 2 3 4	5 6 7 8 9 10 11 12 13 14 15 16	17 18 19 20	G
F	1 2 3 4 5	6 7 8 9 10 11 12 13 14 15 16	17 18 19 20 21	F
E	1 2 3 4 5 6	7 8 9 10 11 12 13 14 15	16 17 18 19 20 21	E
D	1 2 3 4 5 6 7	8 9 10 11 12 13 14 15	16 17 18 19 20 21 22	D
C	1 2 3 4 5 6 7 8	9 10 11 12 13 14 15	16 17 18 19 20 21 22 23	C
B	1 2 3 4 5 6 7 8	9 10 11 12 13 14 15	16 17 18 19 20 21 22 23	B
A	1 2 3 4 5 6 7 8 9 10 11 12	13 14 15 16 17 18	19 20 21 22 23 24 25 26 27 28 29 30	A

DRESS CIRCLE

R	1 2 3 4 5 6 7 8 9 10 11 12 13 14 15 16 17 18	R	
Q	1 2 3 4 5 6 7 8 9 10	11 12 13 14 15 16 17 18 19 20	Q
P	1 2 3 4 5 6 7 8 9 10	11 12 13 14 15 16 17 18 19 20	P
O	1 2 3 4 5 6 7 8 9 10	11 12 13 14 15 16 17 18 19 20 21	O
N	1 2 3 4 5 6 7 8 10	11 12 13 15 16 17 18 19 20	N
M	1 2 3 4 5 6 7 8 10	11 12 13 15 16 17 18 19 20 21	M
L	W 3 4 5 6 7 8 9 10	11 12 13 14 15 16 17 18 19 20	L
K	W 4 5 6 7 8 9 10	11 12 13 14 15 16 17 18 19 20 21	K
J	W 3 4 5 6 7 8 9 10	11 12 13 14 15 16 17 18 19 20 21	J

G	1 2 3 4 5 6 7 8 9 10 11 12 13 14 15 16 17 18 19 20 21 22 23	G
F	2 3 4 5 6 7 8 9 10 11 12 13 14 15 16 17 18 19 20 21 22 23	F
E	1 2 3 4 5 6 7 8 9 10 11 12 13 14 15 16 17 18 19 20 21 22 23	E
D	2 3 4 5 6 7 8 9 10 11 12 13 14 15 16 17 18 19 20 21 22 23	D
C	3 4 5 6 7 8 9 10 11 12 13 14 15 16 17 18 19 20 21	C
B	5 6 7 8 9 10 11 12 13 14 15 16 17 18 19	B
A	5 6 7 8 9 10 11 12 13 14 15 16 17 18 19	A

